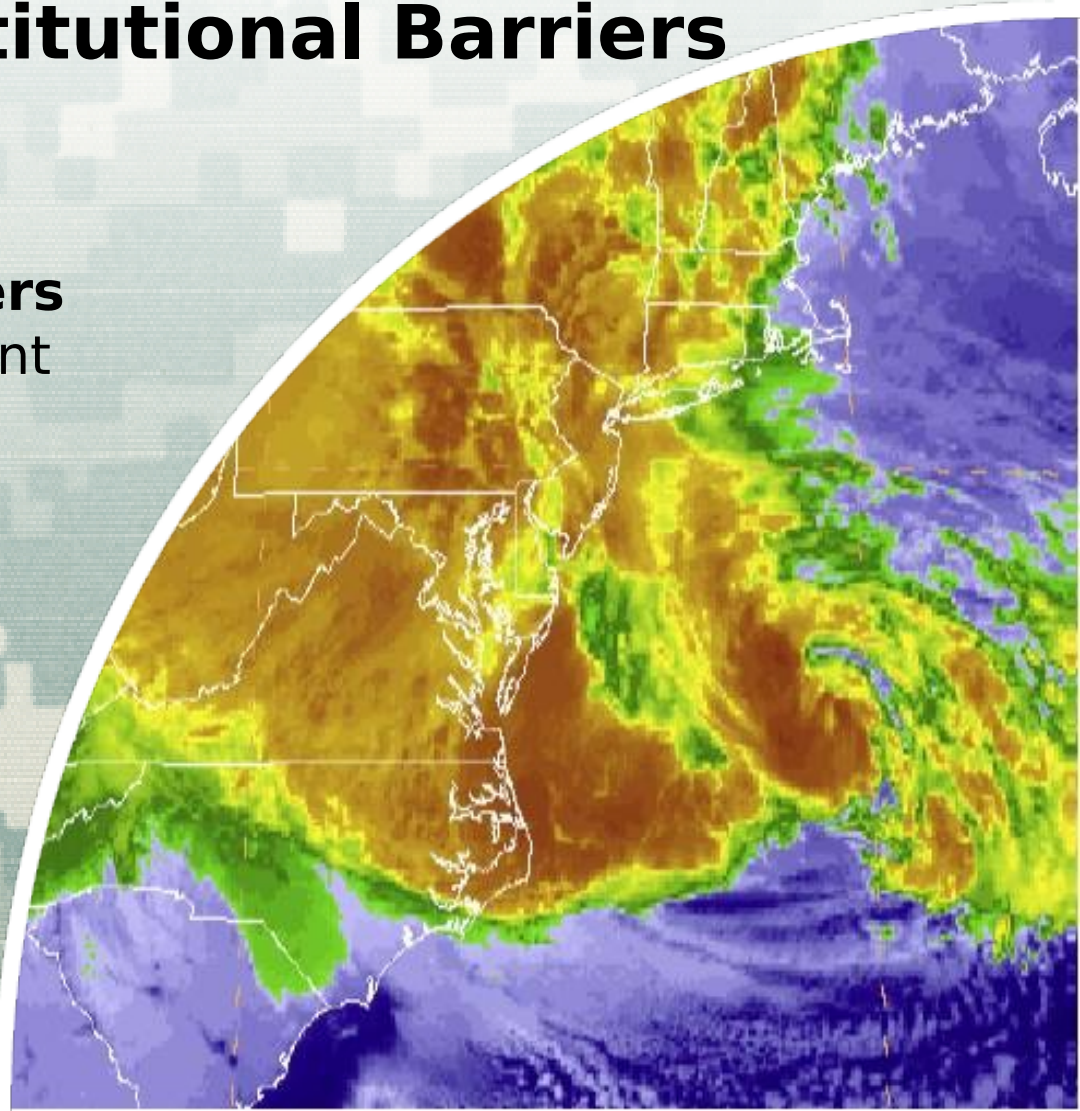


# **North Atlantic Coast Comprehensive Study Collaboration Webinar Series #5: Policy Challenges and Institutional Barriers**

**U.S. Army Corps of Engineers**  
Coastal Storm Risk Management  
Planning Center of Expertise

**19 December 2013**



# Overview

- ❑ Hurricane Sandy impacted the Atlantic coastline in October 2012
- ❑ Affected entire east coast:  
24 States from Florida to Maine; New Jersey to Michigan and Wisconsin
- ❑ Greatest areas of impact:  
New Jersey, New York, Connecticut



**BUILDING STRONG®**

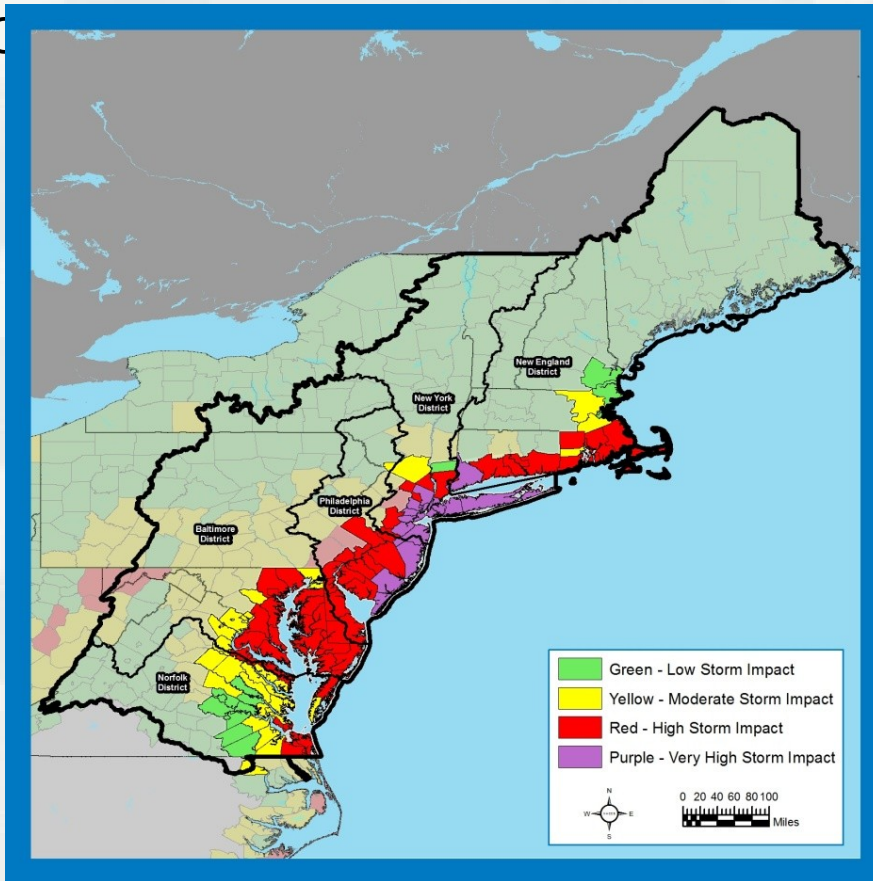
- ❑ Public Law 113-2 enacted<sup>2</sup>

# Background

“That using up to \$20,000,000\* of the funds provided herein, the Secretary shall conduct a **comprehensive study** to address the flood risks of **vulnerable coastal populations** in areas that were affected by Hurricane Sandy within the boundaries of the North Atlantic Division of the Corps...” (\*\$19M after sequestration)

## Goals:

- Provide a Risk Reduction Framework , consistent with USACE-NOAA Rebuilding Principles
- Support Resilient Coastal Communities and robust, sustainable coastal landscape systems, considering future sea level rise and climate change scenarios, to reduce risk to vulnerable population, property, ecosystems, and infrastructure.





# Technical Teams

# Products

- ❑ **USACE Enterprise**
- ❑ **Agency Subject Matter Experts**
  - Engineering
  - Economics
  - Environmental, Cultural, and Social
  - Sea Level and Climate Change

- ❑ **Coastal Framework**
  - Regional scale
  - Collaborative
  - Opportunities by region/state
    - Identify range of potential solutions and parametric costs by region/state
    - Identify activities warranting additional



- ❑ **Not a Decision Document**
  - No NEPA barriers
  - No Recommendations

